

# KITSAP DISEASE DATA

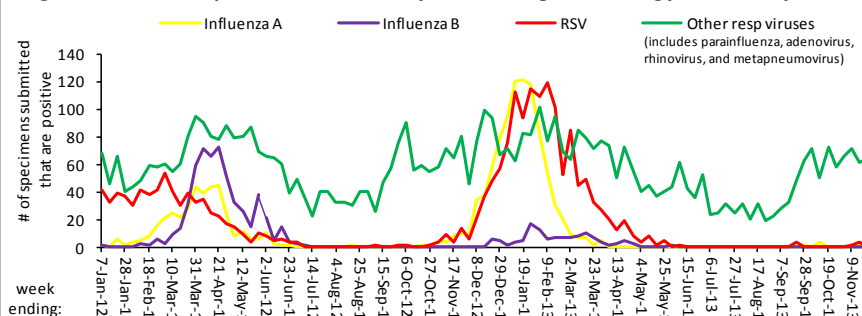
A quarterly report on disease trends in Kitsap from Scott Lindquist, MD MPH

Fall 2013

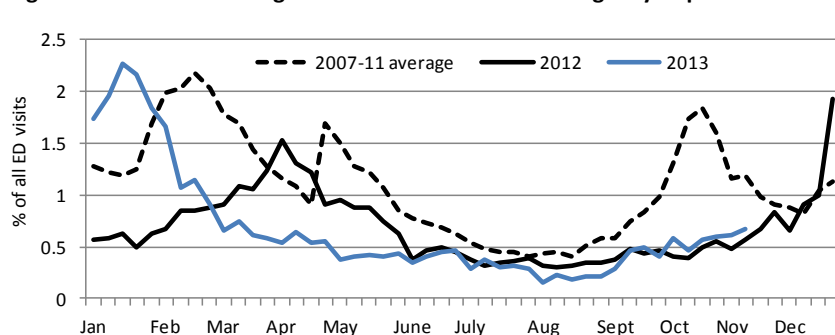
## FLU NEWS

We are well into our viral respiratory season as evidenced by an increase in certain respiratory viruses (Figure 1). Influenza A has appeared at low levels and ED ILI visits (Figure 2) are up slightly and may herald the onset of the Flu Season. Be ready and, most of all, step up infection control practices in your offices. Who wipes down the front door handle and how often? How good are your staff at washing hands before/after patients? How do you handle coughing patients in the waiting room?

**Figure 1. Positive Specimens, University of Washington Virology Laboratory**



**Figure 2. Western Washington Influenza-like Illness Emergency Department Visits**



## NOTIFIABLE NEWS

Through October 2013, most notifiable conditions are similar to the past 3 years with three exceptions: fewer pertussis and rabies suspected exposure cases and more Gonorrhea.

A way to combat the spread of Gonorrhea is through Expedited Partner Therapy (EPT), a tool that allows clinicians to prescribe treatment for partners of affected patients. EPT is provided **free** through the WA State Department of Health. For details on the EPT Program in Kitsap, please call Beth Phipps RN at Kitsap Public Health at 360-307-4309.

## REPORT NOTIFIABLE CONDITIONS TO KITSAP PUBLIC HEALTH 24/7

During business hours call 360-337-5235. After hours call the Regional Duty Officer at 360-415-2005 or 911.

**Table 1. Selected Notifiable Conditions**

Kitsap Resident Cases January - October	Annual Average 2010, 2011, 2012	2013
Campylobacter	31	34
Shiga toxin-producing E.coli (STEC)	2	1
Giardia	17	16
Hepatitis A	1.3	2
Influenza*	0.7	0
Pertussis	41	6
Salmonella	22	16
Tuberculosis	2	1
Chlamydia	741	750
<b>Gonorrhea</b>	<b>45</b>	<b>82</b>
Lyme disease	0.3	0
Rabies suspected exposures	9	2

In 2010-12 and 2013, no reported cases of: Brucellosis, Cryptococcus gattii, Hantavirus pulmonary syndrome, Leptospirosis, Plague, Psittacosis, Q Fever, Tularemia, West Nile Virus.

### Animal Surveillance (as of October 31, 2013):

In 2013, one bat positive for rabies.  
In 2012 and 2013, no reported cases of: Cryptococcus gattii or West Nile Virus in mammals, birds or mosquitos.

\*Novel strains and lab-confirmed deaths

Note: 2013 cases are preliminary and case counts may change as reports are finalized.



KITSAP PUBLIC  
HEALTH DISTRICT

345 6th Street  
Suite 300  
Bremerton, WA 98337

360-337-5235 t.  
360-337-5291 f.

kitsappublichealth.org

