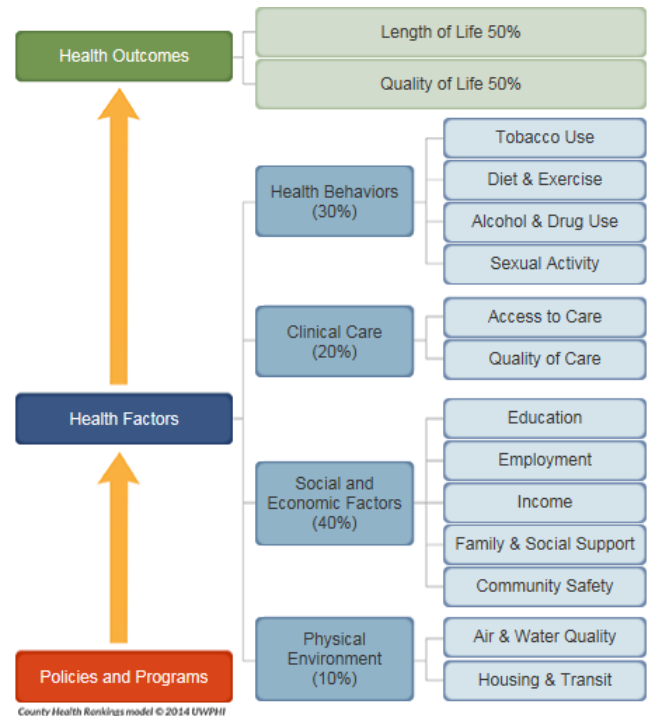


About the County Health Rankings & Roadmaps and Kitsap Core Public Health Indicators Report

About the County Health Rankings & Roadmaps

- <http://www.countyhealthrankings.org/>
- Developed by the Robert Wood Johnson Foundation and the University of Wisconsin Population Health Institute
- First released in 2010 for all U.S. counties, updates released annually but not comparable over time due to changes in definitions and sources
- Counties ranked within each state by indicators and section to allow comparison
- Data sources are national and must have data for *almost all* counties across the U.S.
- **Rankings & Roadmaps Contents:**
 - 35 indicators in 2 sections and 6 sub-sections:
 - Health Outcomes
 - Length of life and Quality of life
 - Health Factors
 - Health Behaviors, Clinical Care, Social and Economic Factors, Physical Environment



About the Kitsap Core Public Health Indicators

- http://www.kitsapcountyhealth.com/information/data_indicators.php
- Developed by Kitsap Public Health District to present an overview of the health of Kitsap
- Data are presented as rates and trend over time using national, state and local data sources

Kitsap Core Public Health Indicator Contents:

- More than 90 indicators in five sections:
 - Demographic profile
 - Who are we?
 - How healthy are we?
 - How healthy are our lifestyles and behaviors?
 - How safe and healthy are our surroundings?

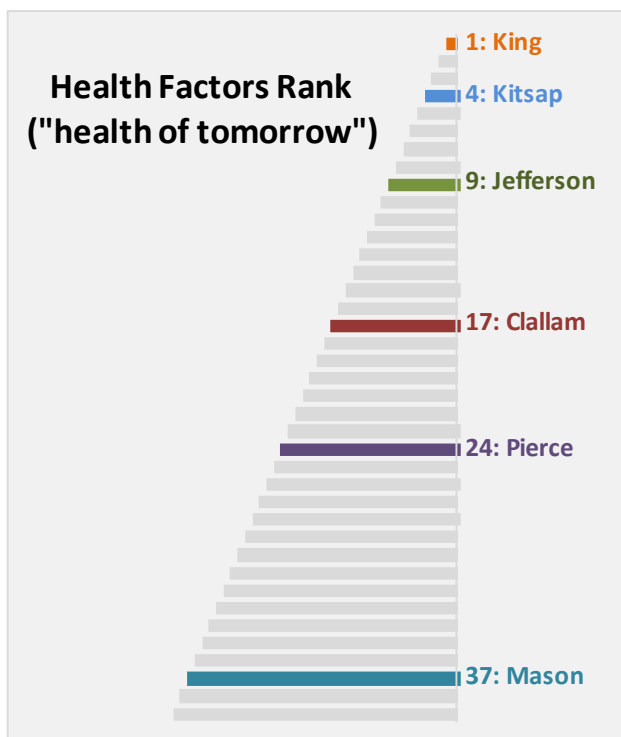
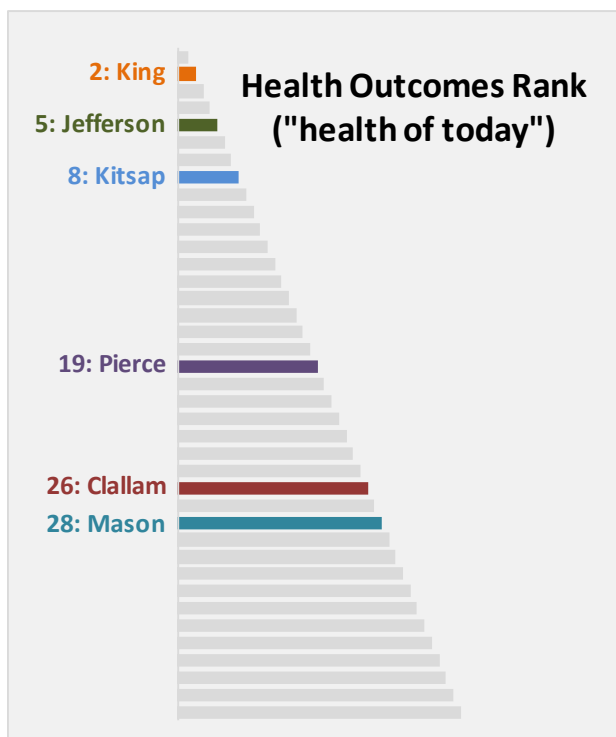
KPHD Indicators and County Health Ranking Comparisons

- KPHD Indicators are:
 - Generated from local, state and national data sources using current data
 - Rates and percentages with statistical trend over time and comparison to WA State
- County Health Rankings are:
 - Generated from national-level data sources
 - Ranks based on comparison to other counties in the state; statistical trend over time for some measures; comparison to WA State and top 10% of U.S. counties

County Health Rankings and Kitsap Core Public Health Indicators both:

- Raise awareness of community health
- Present a call to action
- Identify areas for more in-depth analysis

2018 County Health Rankings:



2018 County Health Rankings Summary for Kitsap County

HEALTH OUTCOMES – KITSAP RANKS 8TH

	RANK	AREAS TO CELEBRATE	IMPROVING TRENDS	AREAS OF CONCERN	WORSENING TRENDS
Length of Life	11 th		<ul style="list-style-type: none"> • Premature death 		
Quality of Life	7 th	<ul style="list-style-type: none"> • Among the lowest average days of poor mental health for adults • Low rate of adults with poor/fair health 		<ul style="list-style-type: none"> • Low birthweight 	

HEALTH FACTORS – KITSAP RANKS 4TH

	RANK	AREAS TO CELEBRATE	IMPROVING TRENDS	AREAS OF CONCERN	WORSENING TRENDS
Health Behaviors	6 th	<ul style="list-style-type: none"> • Among the lowest for adults smoking • Low rate of physical inactivity 	<ul style="list-style-type: none"> • Alcohol-impaired driving deaths 	<ul style="list-style-type: none"> • Adult obesity • Adult excessive drinking • Alcohol-impaired driving deaths • Sexually transmitted infections (chlamydia) 	<ul style="list-style-type: none"> • Adult obesity • Sexually transmitted infections (chlamydia)
Clinical Care	7 th	<ul style="list-style-type: none"> • Second lowest rate of uninsured • Low rate of preventable hospital stays 	<ul style="list-style-type: none"> • Uninsured (both adults and children) • Preventable hospital stays 	<ul style="list-style-type: none"> • Access to primary care physicians • Diabetes monitoring • Mammography screening 	<ul style="list-style-type: none"> • Mammography screening
Social and Economic Factors	6 th	<ul style="list-style-type: none"> • High rate of adults with some college • Low rate of children in poverty 	<ul style="list-style-type: none"> • High school graduation • Violent crime 	<ul style="list-style-type: none"> • High school graduation • Rate of social associations • Violent crime rate 	<ul style="list-style-type: none"> • Children in poverty
Physical Environment	28 th		<ul style="list-style-type: none"> • Air pollution 	<ul style="list-style-type: none"> • Average daily air pollution • Drinking water violation 	

Kitsap County results on the County Health Rankings website:

<http://www.countyhealthrankings.org/app/washington/2018/rankings/kitsap/county/outcomes/overall/snapshot>

This fact sheet can be found on the Kitsap Public Health District Website at:

<http://kitsappublichealth.org/information/files/CountyHealthRankings.pdf>